

Electric  
**GLASS KETTLE**

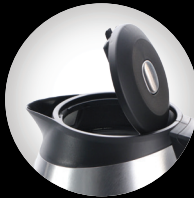
**FUTURA**



IM 202

Instruction Manual

## 7 Features and Benefits



### Easy-Release Lid

Easy-release button makes it effortless to open, fill, and close



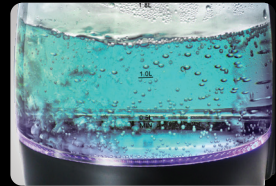
### Spout with Fine Mesh

For easy pouring and straining



### Keep Warm

Red button to keep water warm through the day



### LED Indicator Rim

Indicates heating



### 360° Swivel Base

Allows for easy use, convenience, and portability from any angle



### Cord Winder

Easily stores the cord to keep your kitchen organized and clutter-free



### Crystal Clear Advantage

Brew till you get your desired colour

# Contents

	<b>Page</b>
<b>Important Safeguards</b>	3
<b>Know Your Futura Electric Glass Kettle</b>	5
<b>Specifications</b>	6
<b>Before First Use</b>	6
<b>How to Use</b>	7
<b>How to Clean</b>	8
<b>Descaling</b>	8
<b>Troubleshooting</b>	9
<b>Guarantee Card</b>	back cover

**Any Questions or Comments? Contact:**

**Hawkins Cookers Limited**

Udyog Mandir 2, Pitamber Lane, Mahim, Mumbai 400 016, INDIA

TEL (91 22) 2444 0807 FAX (91 22) 2444 9152

EMAIL: [kitchen@hawkins.in](mailto:kitchen@hawkins.in)

WEBSITE: [www.hawkinscookers.com](http://www.hawkinscookers.com)

© 2025 and All Rights Reserved. 'Futura' and 'Hawkins' are the Registered Trademarks of Hawkins Cookers Limited in India and in various other countries throughout the world.  
CIN: L28997MH1959PLC011304.

# Important Safeguards

1. Read all instructions before use.
2. **Do not** use the Kettle for any use other than its intended use.
3. **Do not** use the Kettle on any base or stand other than the power base provided.
4. **Do not** immerse, put under running water or place on a wet surface cord, switches, plugs, Kettle or base to protect against fire, electric shock, equipment damage and injury. **Do not** operate the Kettle if your hands/gloves/feet/footwear are wet.
5. This appliance incorporates an earth connection.
6. **Do not** touch hot surfaces – use the handle. Handle with care at all times.
7. **Do not** open the lid during a boiling cycle – this may cause scalding. To avoid burns and risk of personal injury, use extreme caution when moving hot liquid contents.
8. **Do not** operate the Kettle on an inclined surface – always use a dry, level surface well away from edges.
9. **Do not** operate the Kettle if body, cord or plug is damaged, if the handle is loose, if it malfunctions, or if it is dropped or damaged in any manner. Do not try to open or repair the Kettle yourself – return it to an Authorised Service Centre for inspection, adjustment and/or repair.
10. **Do not** overfill the Kettle above the maximum level marking  $\frac{\text{MAX}}{1.8 \text{ L}}$ . If the Kettle is overfilled, boiling liquid may be ejected. **Do not** fill the Kettle below the minimum level marking  $\frac{0.5 \text{ L}}{\text{MIN}}$ .
11. **Do not** allow the Kettle to boil dry. **Do not** switch it ON if it is empty.
12. Do not operate the Kettle with the lid open. You may occasionally open the lid briefly to stir the contents, but ensure it is closed promptly. Operating with an open lid will affect the functioning of the Kettle.
13. Take care when boiling tea, soup or liquid that may froth and boil over rapidly and ejected from the Kettle. It is best to watch carefully and switch the Kettle OFF before vigorous boiling starts in such cases.
14. **Do not** place the Kettle or cord on or near a hot gas or electric burner, in a heated oven, or in a microwave. **Do not** let the cord hang over the table or counter edge, where

it can snag or trip unintentionally. Untie knots and/or untangle cord before use.

**15.** The Kettle is not intended for use by persons (including children) with reduced physical, sensory or mental capabilities or lack of experience and knowledge, unless they have been given supervision or instructions concerning use of the appliance by a person responsible for their safety. Children should be supervised to ensure that they do not play with the appliance.

**16.** Unplug from socket when not in use and before cleaning. Allow to cool before cleaning. Handle with care, the glass may be hot. Clean Kettle with a damp cloth or sponge.

**17.** To operate, always insert plug into the power outlet and then turn the power button ON. The power button will automatically switch OFF when water boils. Remove plug from power outlet when not in use.

**18.** Dissolved substances in water or other Kettle contents may deposit on and stain the inside surface. This is not a material defect. Follow the cleaning/descaling instructions provided herein to remove or minimize the stains to the extent possible.

**19. Do not** point a Kettle in operation towards any person, or at walls, cabinets or other objects that may be affected by steam.

**20. Do not** drink directly from the Kettle – the contents may be very hot.

**21. Do not** wash the Kettle or any of its parts in a dishwasher – hand wash only. **Do not** quench hot Kettle in water or attempt to clean it while hot – let it cool naturally first. **Do not** clean the Kettle with harsh cleansers, steel wool pads, or other abrasive materials.

**22. Do not** use the Kettle to store food or any other items. When not in use, wash and wipe dry before storing.

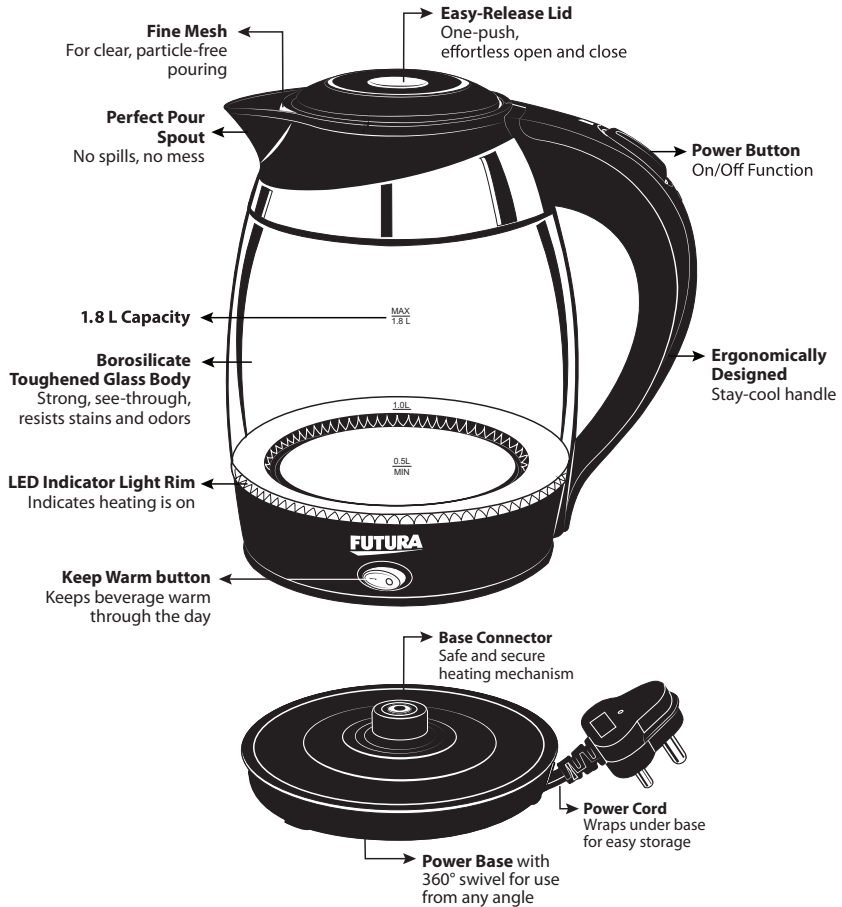
**23.** This appliance is designed for regular domestic use.

**24. Do not** use any method to descale the Kettle other than that recommended herein.

**25.** The guarantee covers manufacturing defects and domestic use only. Any breakage or damage resulting from a failure to comply with these instructions for use is not covered by the guarantee.

**26. SAVE THESE INSTRUCTIONS.**

# Know Your Futura Electric Glass Kettle



# Specifications

<b>Capacity</b>	1.8 Litre
<b>Power consumption</b>	1300 W
<b>Plug and Wire</b>	6A standard plug
<b>Operating voltage</b>	220V, 50 Hz
<b>Guarantee</b>	1 Year

## Before First Use

- Remove all packaging material.
- Check and confirm that the available power voltage complies with the rated Kettle voltage of 220V AC and that the power outlet can bear the rated load of 1300 Watts and is properly earthed. Plug into power outlet and switch on at the wall.
- Push the button on the lid to open. Clean and wash Kettle. Add water up to **MAX 1.8 L** marking.
- Place Kettle on Power Base on a flat, level surface.
- Turn Kettle ON by pushing the Power Button on the stay-cool handle. The Kettle will switch ON and the LED Indicator Rim will light up with a blue colour to indicate that the Kettle is ON.
- Kettle will automatically turn OFF after the water is boiled.
- Discard boiled water – do not consume.
- Your Kettle is now ready to use.

# How to Use

## 360° SWIVEL POWER BASE

- Release cord from under Power Base and adjust length to reach the power outlet.

## FILLING

- Remove Kettle from Power Base before filling.
- Open lid and fill Kettle to desired level:
  - a. Do not fill less than  $\frac{0.5L}{MIN}$  marking, to prevent the Kettle running dry, which will shorten its life.
  - b. Do not fill more than  $\frac{MAX}{1.8L}$  marking – if overfilled, boiling water may be ejected, causing injury.

## TURNING THE KETTLE ON/OFF

- Fill the Kettle to the desired level. Close lid.
- Place Kettle (with contents) on Power Base.
- Plug Power Base into the power outlet and switch ON the power source.
- Do not forget to close the lid after filling, otherwise the kettle will not automatically switch off after use.
- Press the Power Button on the handle. The LED Indicator Rim on base of the Kettle will light up with blue light. The Kettle is now switched ON. The Kettle will boil the liquid contents up to 100°C at sea level and will automatically switch OFF the power button and LED Indicator Rim light thereafter.
- The kettle may be switched off manually at any time by setting the on/off button to the OFF position.

## KEEP WARM FUNCTION

- The red Keep Warm switch is on the plastic casing at the base of the glass body.
- Switch ON after boiling to activate the Keep Warm mode (the switch will glow with a red light).
- The Keep Warm mode maintains the temperature of the contents at about 85°C.
- Switch OFF to deactivate Keep Warm mode.

## BOIL-DRY PROTECTION

- “Boil-Dry” occurs when the liquid contents fall to an unacceptably low level, which can cause the heating element to burn out if not handled promptly and properly.
- A boil-dry event will switch the Kettle into standby mode automatically – the switch may still stay ON, however the backup thermostat will switch the heating element OFF (indicated by LED Indicator Rim blue light going off).
- Immediately remove Kettle from the Power Base.
- Set the Kettle down on a flat surface. Add water at least upto  $\frac{0.5 \text{ L}}{\text{MIN}}$  mark at room (or cooler) temperature. Shut the lid. Switch OFF the Kettle and then restart.

## How to Clean

- Unplug the Kettle and allow to cool naturally before cleaning.
- Use a soft damp cloth to wipe the Kettle body and its Power Base. **Do not allow the electric socket on the exterior base of the Kettle to get wet, sit on a wet counter, or be wiped with a wet cloth.**
- Never immerse Kettle or its Power Base in water.
- Wipe the exterior of the Kettle with a soft, damp cloth or sponge. Remove stubborn spots with a cloth moistened with mild liquid detergent.
- Please ensure you do not let water/liquid flow into the handle thermostat passage at any time (located just under the hinge of the lid towards the handle).
- Clean with a non-abrasive kitchen cleanser and a plastic scrubber. Wash and wipe dry.
- Do not wash Kettle or any of its parts in a dishwasher. Hand wash only.

## Descaling

Scaling is a naturally occurring build up generally caused by mineral deposits present in hard water. Descaling the Kettle regularly can increase the useful life of the Kettle, allowing it to boil water faster with less energy. The ideal descaling cycle depends on the water hardness and occurrence of deposit. The guarantee is void if descaling is not carried out in accordance with these instructions. If scale deposits build up inside the Kettle, please follow steps overleaf to descale it:

1. Add 1 tbsp/15 ml lemon juice or  $\frac{1}{2}$  cup/120 ml of distilled vinegar into the Kettle.

2. Add 2 cups/500 ml of fresh water. Bring the mixture to a boil.
3. Let mixture cool about 15 minutes to loosen the deposits, then pour out contents.
4. Use a soft damp cloth, sponge or brush to clean off any remaining deposits.
5. Rinse inside surface thoroughly with fresh water.

## Troubleshooting

Issues that may occur, and their possible solutions, are given below.

Problem	Solution
A. Kettle won't turn on	<ol style="list-style-type: none"> <li>i. Make sure the power cord is securely plugged into the power outlet.</li> <li>ii. Check that the outlet is in working condition – test in another outlet as a cross check.</li> <li>iii. Check and reset the MCB if it has tripped.</li> <li>iv. If using an extension board with multiple connections, detach other connections prior to retrying.</li> </ol>
B. The Kettle does not heat up.	<ol style="list-style-type: none"> <li>i. Reposition Kettle correctly on the base.</li> </ol>
C. Auto Shut-Off Not Working	<ol style="list-style-type: none"> <li>i. The internal thermostat may be malfunctioning. Allow the Kettle to cool down completely, then try restarting it.</li> </ol>
D. Kettle Turns Off Too Early	<ol style="list-style-type: none"> <li>i. Follow the descaling instruction given on page 8.</li> <li>ii. Boil-dry protection may have activated due to insufficient water. Ensure the water level is at or above the minimum fill mark (and other boil-dry precautions) before switching on.</li> </ol>
E. Excessive Steam Escaping From Lid	<ol style="list-style-type: none"> <li>i. Close lid until it clicks shut.</li> <li>ii. Reduce water to below the <b>MAX 1.8 L</b> marking.</li> </ol>
F. Water Smells or Tastes Odd	<ol style="list-style-type: none"> <li>i. Boil and discard water 2-3 times before use.</li> <li>ii. Clean regularly and use fresh water.</li> </ol>
G. Kettle Leaking Water	<ol style="list-style-type: none"> <li>i. Do not fill above <b>MAX 1.8 L</b> line.</li> <li>ii. Check body carefully for cracks – do not use if discovered.</li> </ol>

If these do not work, please contact Hawkins Customer Service.



Keep Warm Function



Boil-dry Protection



LED Indicator Rim



Borosilicate  
Toughened Glass

# FUTURA

*The Future of  
Cooking*



**1300 W**

# FUTURA Electric GLASS KETTLE

# 1 Year Guarantee

TERMS AND CONDITIONS

GUARANTEE  
NO.



For details of  
BIS Certification  
Please visit  
[www.bis.gov.in](http://www.bis.gov.in)

SOLD BY  
Name & Address  
of the Dealer  
& stamp

Date of Purchase:

**1.** The Futura Electric Glass Kettle is guaranteed for a period of one year from the date of first purchase by the user against defects in material and workmanship. **2.** Fair wear and tear is not a defect. The finish of the glass, plastic or steel parts of the Kettle may stain, fade, scratch or dull and are not guaranteed; this will not affect the functioning of the Kettle. Damages caused by external electrical faults, surges, mishandling etc., are not covered under this guarantee. **3.** Both Kettle and Power Base must be used properly in accordance with the printed instructions contained herein. In particular, all instructions given in the Caution alongside must be followed. **4.** Both Kettle and Power Base under complaint must be returned to us or our authorised Electrical Service Centre at the user's cost along with this Guarantee. The serial number on the Guarantee must match the serial number on the bottom of the Kettle and the Power Base. In case you register your guarantee online (using the QR code below) the facility to repair or replace will be available at any Hawkins Authorised Service Centre. **5.** Genuine Parts of our manufacture must be used at all times. **6.** Neither Kettle nor Power Base should be damaged, weakened, modified or repaired by any unauthorised person.

**7.** Subject to the above mentioned terms and conditions, we shall repair or replace free of cost any defective part or parts or the whole Kettle and/or Power Base at our option.

## CAUTION

**1.** Do not immerse cord, plug, power base in water/liquid, to protect against fire, electric shock, equipment damage and injury. Do not operate the Kettle if your hands/gloves/feet/footwear are wet. **2.** Do not operate Kettle with the lid open, especially during a boiling cycle - this may cause scalding. **3.** Do not operate the Kettle on an inclined surface - always use a dry, level surface well away from edges. **4.** Do not operate the Kettle if body, cord or plug is damaged, if it malfunctions, or if it is dropped or damaged in any manner. **5.** Do not overfill the Kettle above the maximum level marking. If the kettle is overfilled, boiling water may be ejected. Do not underfill the Kettle below the minimum level marking. **6.** Do not allow the Kettle to boil dry. Do not switch it ON if it is empty. **7.** Do not wash the Kettle or any of its parts in a dishwasher. Hand wash only. Do not clean the Kettle with harsh cleansers, steel wool pads, or other abrasive materials.



Scan to register guarantee